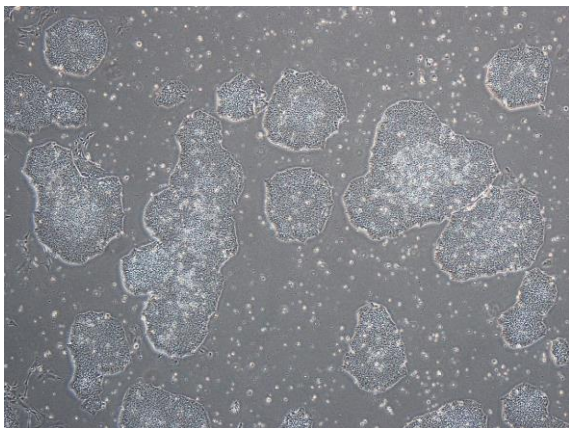
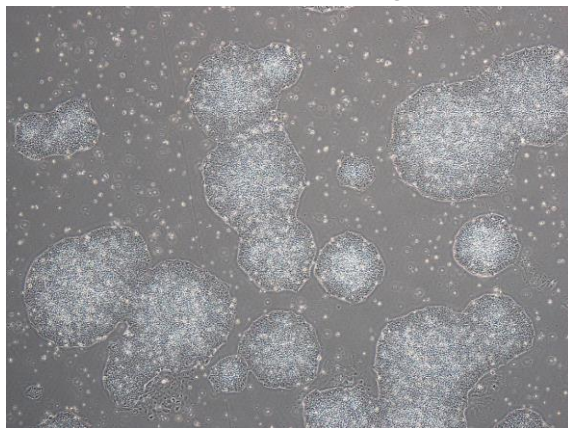


## 【 CiRA-j-1049 】 Morphology of iPSC colonies

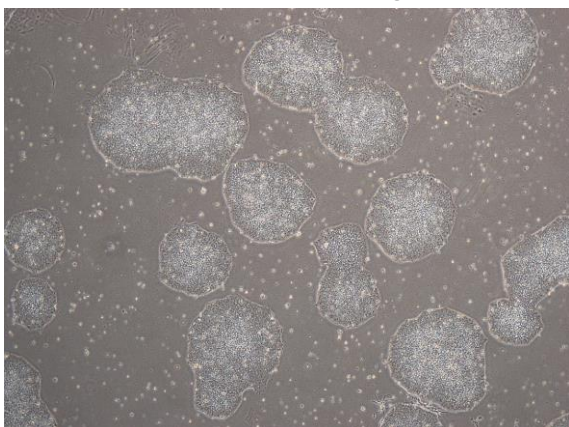
CiRA-j-1049-A: passage-2



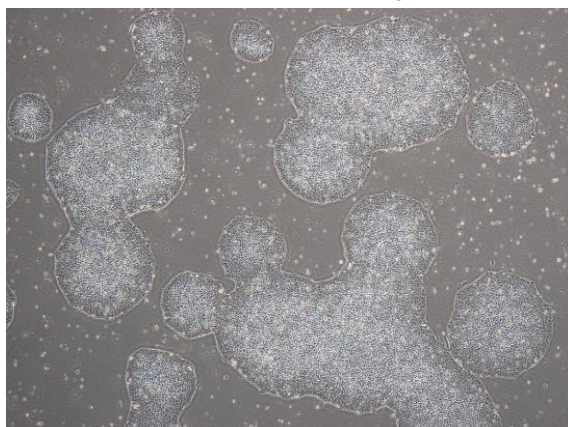
CiRA-j-1049-B: passage-2



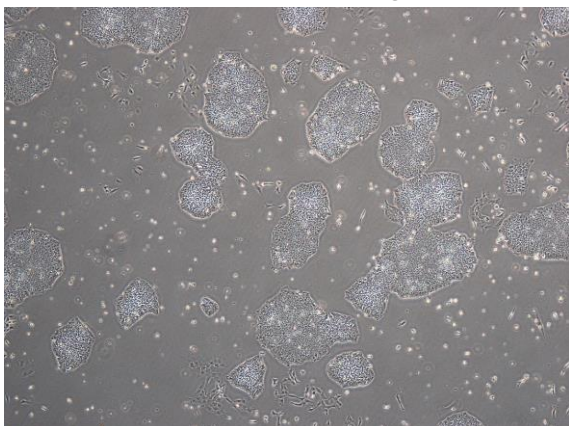
CiRA-j-1049-C: passage-2



CiRA-j-1049-D: passage-2



CiRA-j-1049-E: passage-2



CiRA-j-1049-F: passage-2



( All images were captured at 4x magnification )